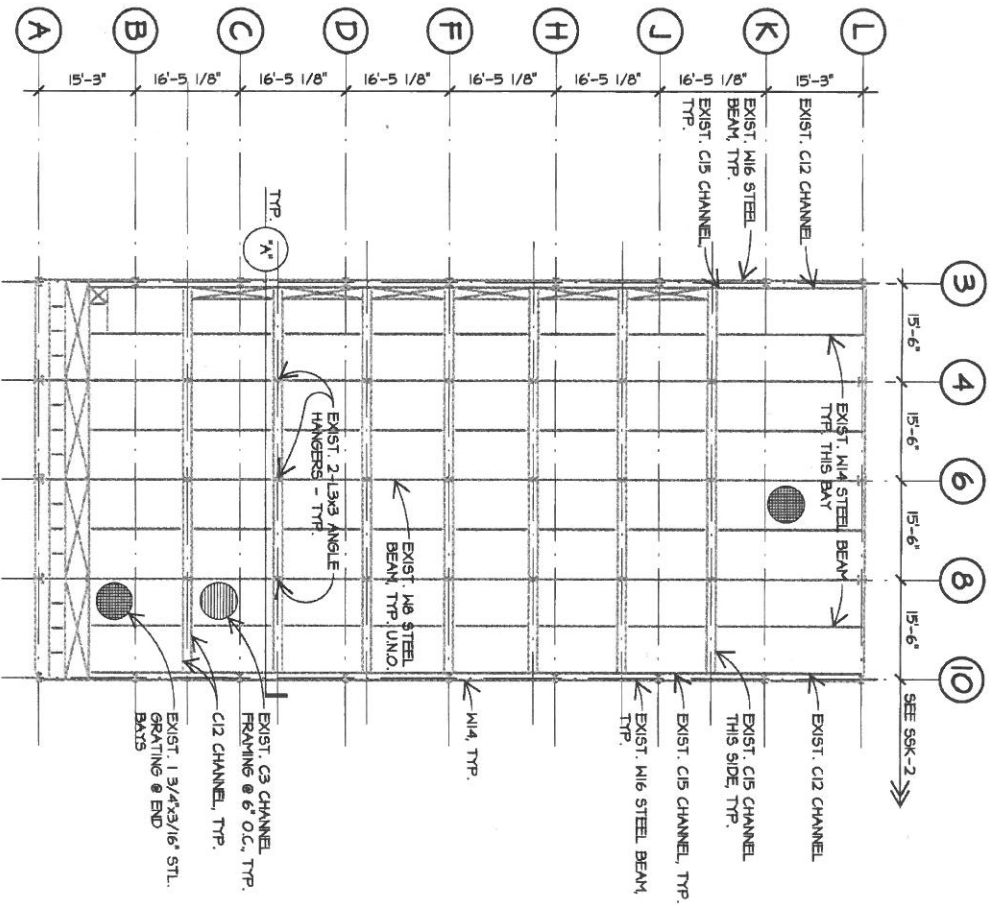
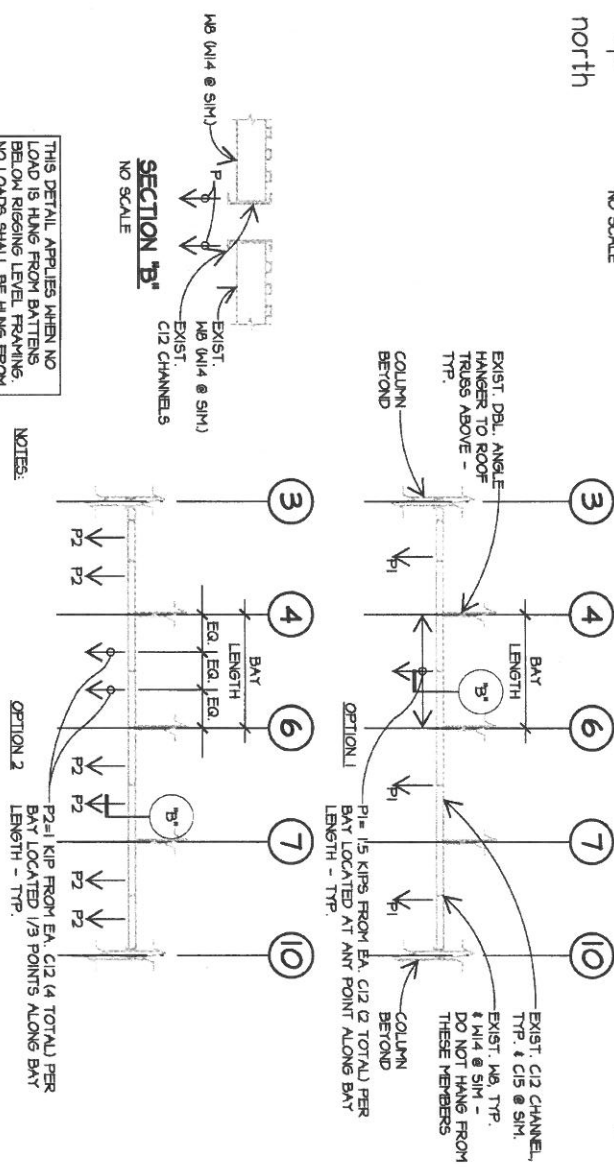


RIGGING SPECIFICATIONS



RIGGING LEVEL FRAMING PLAN ABOVE COURT/STAGE
NO SCALE

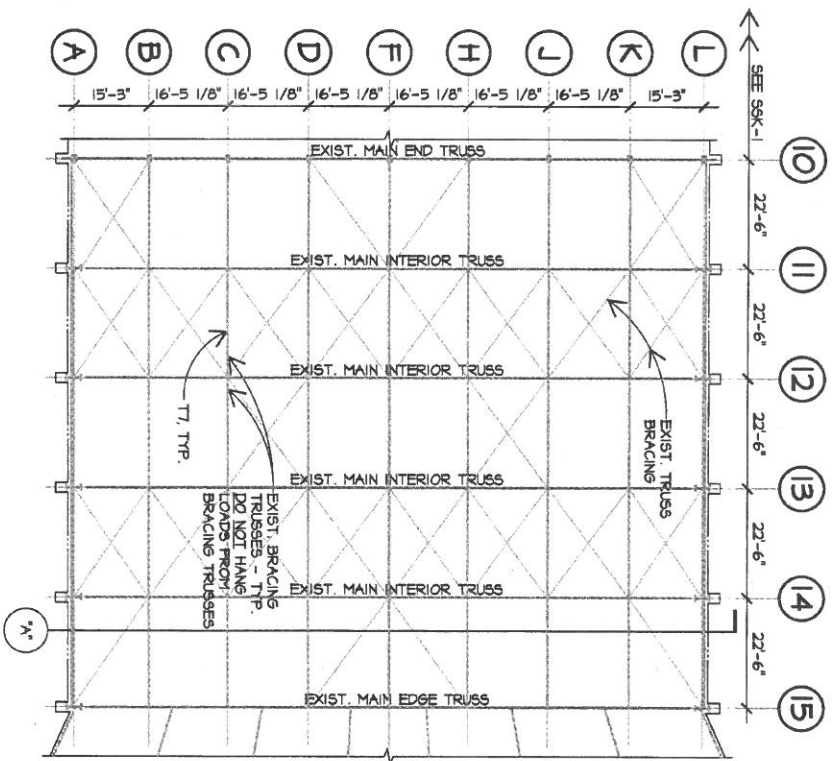


THIS DETAIL APPLIES WHEN NO LOAD IS HUNG FROM BATTENS BELOW RIGGING LEVEL. FRAMING, NO LOADS SHALL BE HUNG FROM FRAMING FOR FULLY LOADED BATTENS BELOW PER SSK-3 & SSK-4

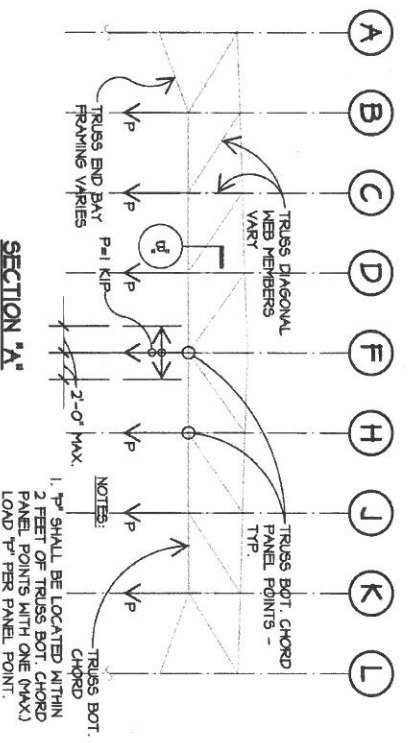
- NOTES:
1. P1 = MAXIMUM ALLOWABLE HANGING LOAD.
 2. C3 CHANNEL FLOORING & STEEL GRATING NOT SHOWN FOR CLARITY.
 3. DO NOT SUPPORT LOADS FROM M8, M14 BEAMS, C3 CHANNEL FLOORING OR GRATING.
- SECTION "A"
NO SCALE

		PROJECT: TEXAS HALL LOADING REVIEW CLIENT: THE UNIVERSITY OF TEXAS AT ARLINGTON REF: 3102728 REV: - DATE: 1/31/11 SHEET: S9K-1	
--	--	---	--





**MAIN TRUSS BOTTOM CHORD
FRAMING PLAN ABOVE SEATING**
NO SCALE



SECTION "A-A"
NO SCALE

		PROJECT: TEXAS HALL LOADING REVIEW	
JASTER-QUINTANILLA DALLAS, LTD. CONSULTING ENGINEERS 2100 COMMERCE ST. • SUITE 300 • DALLAS, TX 75201 PH: 214-762-4888 FAX: 214-762-8771		CLIENT: THE UNIVERSITY OF TEXAS AT ARLINGTON	
REF: 3102728	REV: -	DATE: 1/31/11	SHEET: SGK-2



LINESET SCHEDULE

LINESET	HOUSE PURPOSE	FPL	SHOW PURPOSE	IN TRIM	OUT TRIM	NOTES	BATTEN LENGTH
1	Grand Curtain	1'-0"				40h X 85w Burgundy Velour, 100% Fullness, No Split	88'-0"
2	Hard Portal	2'-0"				Portal Legs Adjustable On & Off Stage 12'-0" Long Arbor	88'-0"
3	#1 Border	3'-0"				12h X 85w Black Velour, Flat	88'-0"
6	#1 Legs	4'-9"				30h X 15w Black Velour, Flat	88'-0"
7		5'-4"					88'-0"
8	#1 ELECTRIC	6'-6"		25'-4.8"		Motorized Line Shaft 42 Stage / 1\Worklight Circuits Offstage #2 Leg moves to this pipe for 60' Opening	88'-0"
11	Flown Audio Monitors	8'-10"					88'-0"
14		11'-2"					88'-0"
16		12'-4"					88'-0"
17	#2 Border	12'-11"				12h X 85w Black Velour, Flat 30h X 15w Black Velour, Flat x2 (Double Hung Legs)	88'-0"
18	#2 Legs	13'-6"					88'-0"
19		15'-3"					88'-0"
20	#2 ELECTRIC	16'-5"		27'-10"		Motorized Line Shaft 42 Stage / 1\Worklight Circuits	88'-0"
22		17'-7"					88'-0"
23		18'-2"					60'-0"
25		20'-6"					88'-0"
27		21'-8"				Offstage #3 Leg moves to this pipe for 60' Opening	88'-0"
30	Grey Curtain	23'-5"				40h X 60w Grey Velour, 100% Fullness	88'-0"
31	#3 Border	24'-0"				12h X 85w Black Velour, Flat 30h X 15w Black Velour, Flat x2 (Double Hung Legs)	88'-0"
32	#3 Legs	24'-7"					88'-0"
34	#3 ELECTRIC	26'-4"		27'-8.7"		Motorized Line Shaft 42 Stage / 1\Worklight Circuits	88'-0"
36		27'-6"					88'-0"
38	Flown Audio Monitors	28'-8"					88'-0"
42		32'-9"					60'-0"
44	#4 Border	33'-11"				12h X 85w Black Velour, Flat	88'-0"
45	#4 Legs	34'-6"				30h X 15w Black Velour, Flat	88'-0"
47	#4 ELECTRIC	36'-3"		29'-4.4"		Motorized Line Shaft 42 Stage / 1\Worklight Circuits	88'-0"
49		37'-5"				12'-0" Long Arbor	88'-0"
51	Black Out Curtain	38'-7"					88'-0"
52	#5 Border	39'-2"				12h X 85w Black Velour, Flat	88'-0"
53	#5 Legs	39'-9"				30h X 15w Black Velour, Flat	88'-0"
54		40'-4"					60'-0"
55		40'-11"					60'-0"
56	Black Scrim	41'-6"				30h X 50' Black Scrim	60'-0"
57	White Cyc	42'-1"				30h X 50w White Seamless Muslin	88'-0"
58		42'-8"					60'-0"
59		43'-3"					60'-0"
60		43'-10"					60'-0"
61	#5 ELECTRIC	45'-7"		28'-6.5"		Motorized Line Shaft 24 Stage Circuits	88'-0"
67		49'-1"					60'-0"
68		49'-8"					60'-0"

GENERAL NOTES:

- Missing lineset numbers are future linesets. T-bar installed. No arbor or line installed.
- There is 13'-4" of apron @ Centerline, and 8'-3" of apron @ 20' Off Center available downstage of Plaster. There are NO linesets over the apron.
- All linesets are single-purchase, double pipe truss battens, 9'-6" arbors with 1,500 lbs. capacity, except for linesets #2 & #51, which are 12'-0" long arbors with 2,000 lbs. capacity.
- All lineset battens are fixed at 60'-0" long, and can be extended to 88'-0 long. Contact Texas Hall at (817) 272-5591 to confirm length configuration above.
- All electric's battens are fixed 88'-0" long double pipe truss battens with overhung raceways, on motorized line shaft.
- House Legs are hung 20'-0" offstage of Centerline.

Updated 10/06/2017